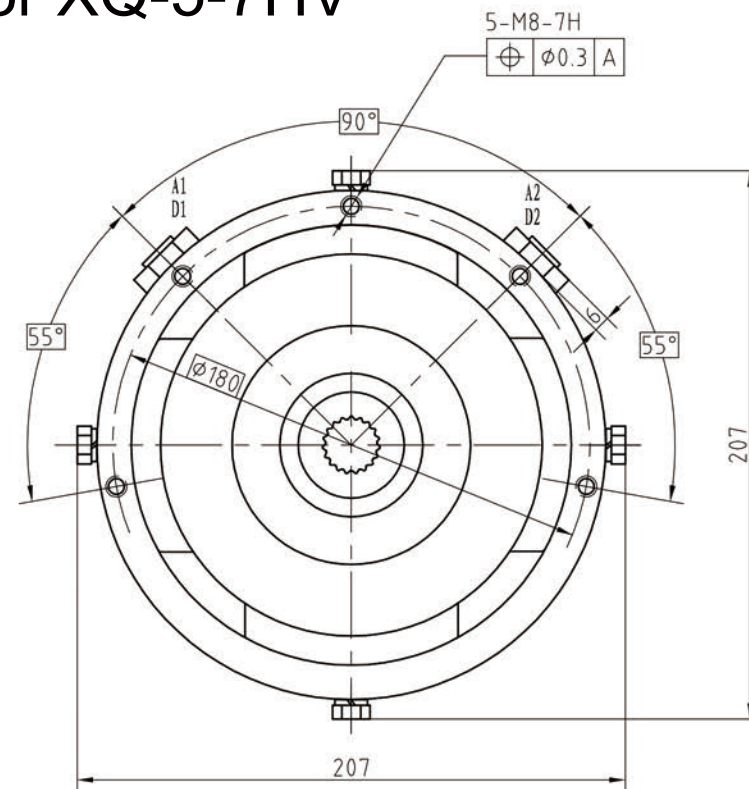
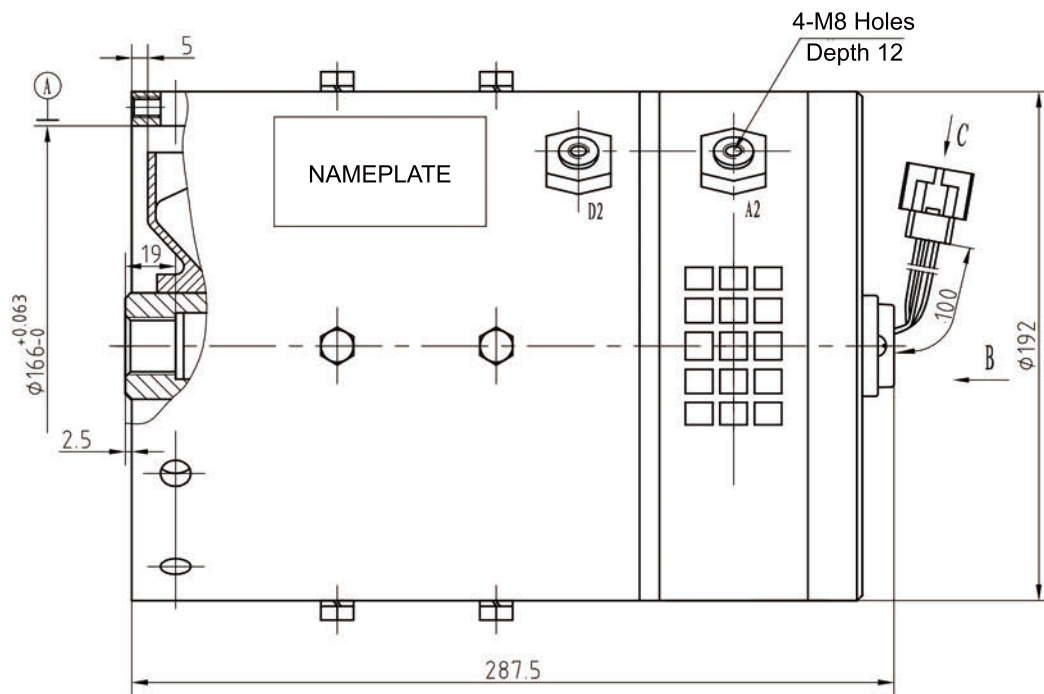


DC Series Winding Motor XQ-5-7HV



Characteristics

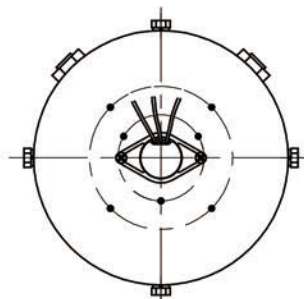
- | | |
|-------------------------|-----------------------------|
| 1. Model: XQ-5-7HV | 7. Duty: 60 min |
| 2. Power rate: 5.0 kW | 8. Exciting: series |
| 3. Rated voltage: 72V | 9. Ingress protection: IP20 |
| 4. Rated current: 84A | 10. Insulation: class F |
| 5. Speed: 2800 rpm | 11. Weight: 34.8 kg |
| 6. Max. speed: 5600 rpm | 12. Standard: JB5335-91 |

- * Speed sensor: 4-pulse per revolution; with 3-Pin connect:
- Red wire: power supply positive (+, 4.5-24V)
 - Black wire: power supply negative (- / ground)
 - Blue wire: speed signal

INVOLUTE SPLINE PARAMETERS

Teeth	z	19
Diametral Pitch	D_p	24/48
Pressure Angle	α	45°
Reference Diameter	d	20.108
Max. Diameter	d_a	21.59 ^{+0.13} ₀
Min. Diameter	d_f	19.473 ^{+0.11} ₀
Modification Coefficient	ξ	0.1
Measurement Between Pins	M	15.798 ^{+0.071} ₀
Pin Diameter	d	2.5

B : B (1 : 4)



C : C (1 : 1)

